



## YOUR EVENT AT THE ALPINA GSTAAD



The Alpina Gstaad is a five-star luxury hotel in Switzerland for the world's most discerning travellers. More than a place to stay in the Alps, it is an icon for mindful, conscious and responsible luxury. Situated in the heart of nature, the eco-friendly hotel combines Swiss traditions with state-of-the-art infrastructure and services. Sustainability and innovation are the pillars by which The Alpina Gstaad is driven. Local products and resources are integrated seamlessly throughout the hotel into creating a modern interpretation of Alpine chic.

The Alpina Gstaad is a member of the Preferred Hotels & Resorts Legend collection, the exclusive Virtuoso travel network, and Swiss Deluxe Hotels. The hotel has received the 'Out Now' certificate – the world's largest LGBT travel trade association – guaranteeing certain standards to LGBT guests. With its commitment to environmental awareness, the property is a member of the NOW Force for Good Alliance and certified Gold by EarthCheck.



## 1578 M<sup>2</sup> SPACE FOR CREATIVITY

Here at The Alpina Gstaad, we offer you a magnificent setting and outstanding services to make your event an unforgettable success.

We will place our team entirely at your disposal to help and advise you throughout the planning process, right from the first meeting, down to the very last details.

Whether you are planning a meeting, seminar or product launch, cocktails with friends or an intimate gathering, our dedicated team will ensure that your event runs seamlessly, that security is watertight and that everything down to the tiniest detail is taken care of.







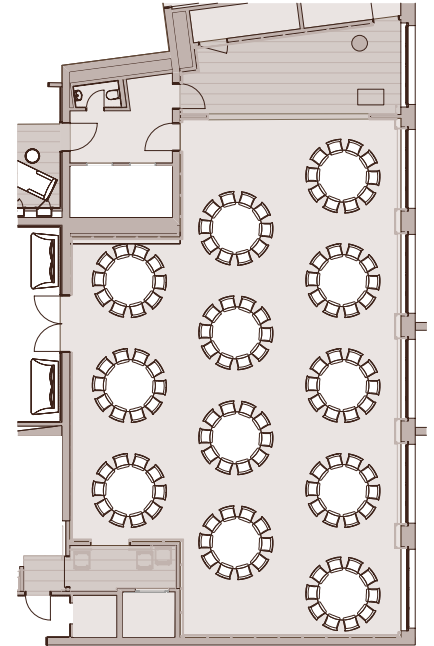
## YOUR MEETING FACILITIES

### Salle Sarine

Tables can be set up according to your preferences.

240 m <sup>2</sup> H: 3.0 m					
People	90	180	150	60	330

- 1x screen (2.9 x 1.6 m)
- 1x 4500 ANSI lumens projector
- Integrated 200-watt speakers
- Blu-ray Disc player
- Wi-Fi
- DJ MA9 mixing console
- Pioneer CDJ 3000 turntable
- Blu-ray Disc player
- 4x Sennheiser microphones (2x hand microphones and 2x tie microphones)





## YOUR MEETING FACILITIES

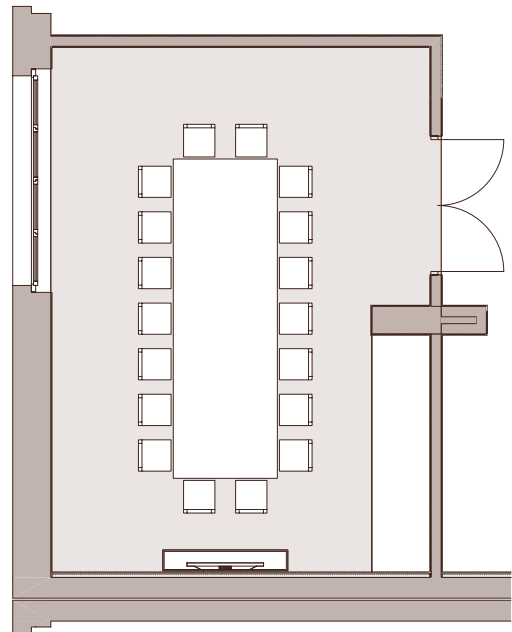
### Boardroom I

14 People

The luminous and inviting space is ideal for your event in an exclusive setting facing towards the picturesque village of Schönrried.

41 m<sup>2</sup>      H: 3.0 m

- 85-inch 4K monitor
- Blu-ray player
- 1x telephone connection
- Wi-Fi
- Boardroom table for 14 people
- Online meeting facilities







## YOUR MEETING FACILITIES

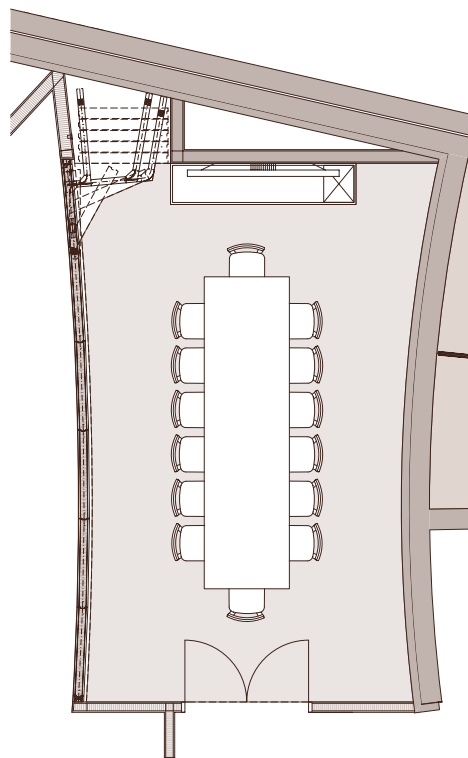
### Boardroom III

16 People

Tucked away in the privacy of this exclusive meeting room, you will find yourself immersed in a calm and intimate working atmosphere.

37 m<sup>2</sup>      H: 2.2 m

- 55-inch full HD NeoPlasma monitor
- Blu-ray player
- 1x telephone connection
- Wi-Fi





## YOUR MEETING FACILITIES

### Auditorium / Private Cinema

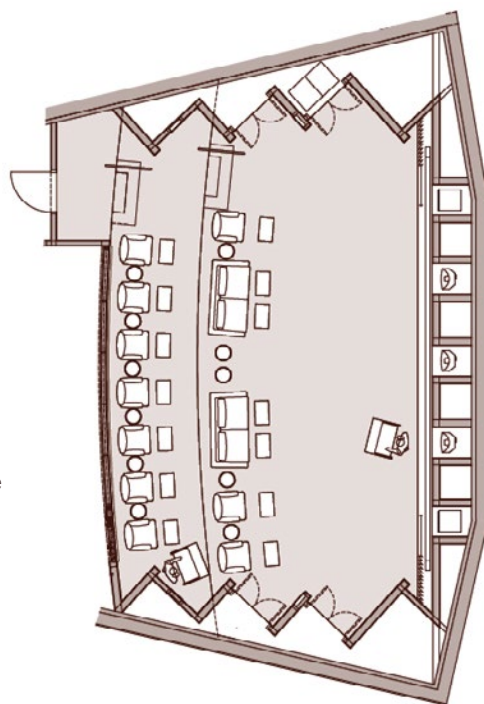
60 People

Located at the heart of the hotel, the auditorium is a highly adaptable space that can be seamlessly tailored to suit your needs.

96 m<sup>2</sup>      H: 3.2 m

- Large screen for presentations: 4.5 x 2.5 m
- Film screenings: 5.9 x 2.5 m
- 4K BenQ projector
- Dolby Digital surround sound system
- DJ MA9 mixing console
- Pioneer CDJ 3000 turntable
- Comfortable armchairs for 14 guests

The space also offers the option for expansion, with its direct connection with Boardroom III.







## SPACES THAT TELL A STORY

From elegant event venues to exceptional restaurants, you'll find the perfect setting to create unforgettable memories. Celebrate in one – or several – of our uniquely enchanting spaces, each offering sweeping views over the picturesque Saanenland.

### Monti

30 guests

Monti's elegant ambiance blends contemporary design with authentic local charm – a place where exquisite flavours and a warm atmosphere come together in perfect harmony.



### Martin Göschel

25 guests

Our Michelin-starred signature restaurant is the perfect setting for an intimate wedding dinner or next-day brunch. Flooded with natural light and adorned with artisanal details and art, it opens onto a panoramic terrace with stunning mountain views.



### Megu

60 guests

A harmonious blend of traditional Japanese floral design and authentic Alpine materials – featuring a live Sushi & Sashimi Bar, a Japanese Whisky Bar, and an outdoor terrace with stunning views.



## SPACES THAT TELL A STORY

### Alpina Lounge

150 guests

Where art, contemporary cuisine, and design converge. Floor-to-ceiling windows blur the line between interior elegance and the open terrace, while curated music sets the tone for an effortlessly refined ambiance.



### Swiss Stübli

35 guests

Dreaming of a traditional Swiss setting with Michelin-starred service? Our Swiss Stübli offers both. This cozy wood-paneled restaurant with its authentic design and private terrace sets the stage for an unforgettable wedding dinner. Let our in-house florist transform the space into a floral wonderland tailored to your vision.

### Cigar Lounge

20 guests

Impressive leather and wood interiors inspired by Havana's iconic clubs – paired with views of the picturesque Alpine landscape.



### Japanese Whisky Bar

4 - 10 guests

Nestled in its own niche at Megu, discover a space dedicated entirely to the world of Japanese whisky. The beautiful bar decorated with handcrafted wood shingles is welcoming the most discerning palates and amateurs of this precious spirit in the greatest intimacy.



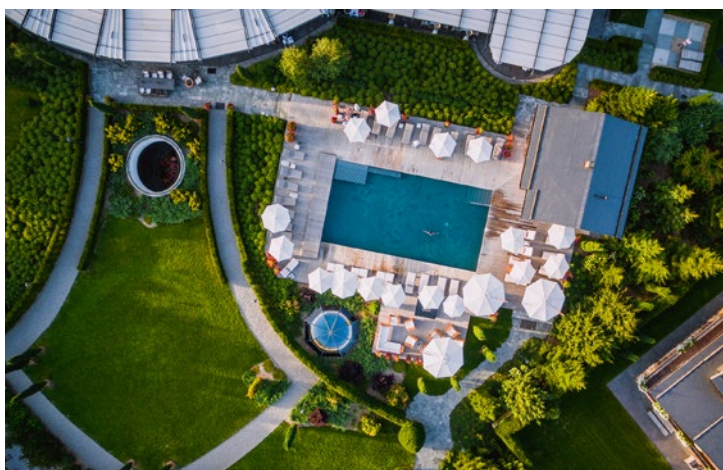


## PRIVATE CELEBRATIONS

For those once-in-a-lifetime occasions, The Alpina Gstaad offers an exceptional setting for private events with heart and soul. From a magical winter wedding in our grand ballroom to a joyful summer garden party, from elegant cocktails on the terrace to a whimsical birthday celebration – each moment is wrapped in the unique charm of our Alpine retreat.

The Alpina Gstaad's very particular blend of the traditional and the avant-garde will embrace your occasion in a unique atmosphere.

And with the care and creativity of our events team, your celebration will be crafted with precision, passion and a personal touch – to make sure it becomes a memory you'll cherish forever.



### ENDLESS POSSIBILITIES

Let us turn your event into a sensory journey through the Bernese Alps. At The Alpina Gstaad, we curate experiences that go far beyond the expected.

Our creative events team is brimming with ideas to help you explore the region in unique and memorable ways. Picture breathtaking mountain backdrops, immersive outdoor activities, and live cooking moments featuring fresh regional ingredients - all brought to life by our expert chefs.

It's Swiss hospitality at its most authentic – warm, welcoming, and memorable.

Let's create something truly special together – we're here to inspire and guide you.



### Events Team

+41 33 888 98 91

[s.oberbeirteiner@thealpinagstaad.ch](mailto:s.oberbeirteiner@thealpinagstaad.ch)



## LOCATION

The Alpina Gstaad is easily accessible by train or car from Bern, Zurich, and Geneva – all served by international airports. Private jets and helicopters can land at the nearby Saanen airport, just 6.5 km from the hotel. Transfers by limousine are available upon request. Complimentary valet parking is provided in our underground garage.







[thealpinagstaad.ch](http://thealpinagstaad.ch)

Alpinastrasse 23 ✦ 3780 Gstaad, Switzerland  
T. + 41 33 888 98 91 ✦ F. + 41 33 888 98 89 ✦ [s.oberbeirteiner@thealpinagstaad.ch](mailto:s.oberbeirteiner@thealpinagstaad.ch)