



AN ICONIC ALPINE EXPERIENCE



The Alpina Gstaad is a five-star luxury hotel in Switzerland for the world's most discerning travellers. More than a place to stay in the Alps, it is an icon for Gstaad and mindful, conscious and responsible luxury. Situated in the heart of nature, the eco-friendly hotel combines Swiss traditions with state-of-the-art infrastructure and services. Sustainability and innovation are the pillars by which The Alpina Gstaad is driven. Local products and resources are integrated seamlessly throughout the hotel into creating a modern interpretation of Alpine chic.

The Alpina Gstaad is a member of the Preferred Hotels & Resorts Legend collection, the exclusive Virtuoso travel network, and Swiss Deluxe Hotels. The hotel has received the 'Out Now' certificate – the world's largest LGBT travel trade association – guaranteeing certain standards to LGBT guests. With its commitment to environmental awareness, the property is a member of the NOW Force for Good Alliance and certified Gold by EarthCheck.



ROOMS & SUITES

The 56 rooms and suites all reflect how Alpine authenticity meets Swiss luxury. Throughout, the region's heritage inspires the detail and careful craftsmanship. Classically carved ceilings and timber-clad walls create a cosy feel along with leather headboards, Swiss farmhouse-style cupboards and chests in the individually furnished rooms. Decorative accessories such as the traditional leather straps used to hold cowbells, are an iconic image for Gstaad, Saanenland. Yet the result is also fresh and modern, delivering an original Alpine chic aesthetic.

25	Deluxe Rooms
14	Junior Suites
9	Deluxe Suites
7	Grand Luxe Suites
1	Chalet Suite
1	Panorama Residence

INCLUDED SERVICES

Daily breakfast in the restaurant Monti or directly in the room, Concierge service, free access to the indoor and outdoor pools, saunas, steam baths, fitness studio and relaxation area with Juice Bar in the Six Senses Spa. All rooms can be set up with Twin or King size beds.





PANORAMA RESIDENCE

The Alpina Gstaad's Panorama Residence is a spacious duplex of 400 m² (4305 ft²) located on the top floors, offering breathtaking views of the valley and surrounding mountains. The residence features three en-suite bedrooms that comfortably accommodate up to six guests - two situated on the lower level and one on the upper level.

The expansive living area includes a wood-burning fireplace, a fully equipped kitchen, and a dining table that seats eight people. On the upper floor, guests can enjoy a private wellness oasis, complete with a spa room, sauna, steam room, gym, and an outdoor jacuzzi.

INCLUDED SERVICES

Daily breakfast in the restaurant Monti or directly in the room, Concierge service, free access to the indoor and outdoor pools, saunas, steam baths, fitness studio and relaxation area with Juice Bar in the Six Senses Spa.





R E S T A U R A N T S

Michelin-starred Executive Chef Martin Göschel supervises The Alpina Gstaad's five restaurants, Martin Göschel, Monti, Megu, Swiss Stübli and the Alpina Lounge & Alpina Terrace, which draw upon the world's classic cuisines. Each is an ode to authentic food and cherishes the finest produce of the region, offering expressions of the chef's famous attention to detail and eye for perfection. With an eclectic collection of spirits, the bar offers an extensive range of cocktails from all-time classics to more avant-garde craft-cocktails and invites guests to enjoy the splendid view of the Swiss Alps.

Martin Göschel

Chef Martin Göschel crafts culinary delights inspired by the finest products from the Saanenland and all of Switzerland. Following a groundbreaking initiative in August 2023, Martin Göschel's restaurant exclusively features Swiss proteins, consciously and deliberately excluding all non-Swiss seafood, meat, and dairy products.

At the same time, the menu supports local, regional, and national producers, strengthening the community while celebrating and reinterpreting Switzerland's culinary heritage in a modern way. Gault Millau awards the restaurant 18/20 points, and the Guide Michelin rates one star.

The restaurant has been designed by the creative minds behind Monti, interior architect Jakob Sprenger and Antonia Crespi.



Megu

Megu's cuisine is a modern take on authentic Japanese dishes that combines flavours from a variety of cuisines and are artfully presented. Head Chef and Sushi Master Tsutomu Kugota and his team are focused on sourcing the most pristine raw ingredients and incorporating unusual local flavours to the Megu culinary journey.

Decidedly contemporary and full of surprises, Megu at The Alpina Gstaad has been awarded several times for its celebration of traditions, delicate signature creations and innovative cuisine. This dedication to excellence is reflected in its 16-point rating from Gault Millau.

A delightful cocoon in Megu is dedicated to excellent and rare Japanese whisky.



RESTAURANTS

Monti

In December 2024, a new restaurant dedicated to the concept of «sharing-style» dining made its debut. Executive Chef Martin Göschel brings guests an array of vibrant dishes, ideal for creating memorable moments over lunch or dinner. The menu features standout experiences such as tableside preparations of meats and fish, a Swiss cheese trolley, and an assortment of inventive salads. The restaurant has been awarded 16 points by Gault Millau just a few weeks after its opening.

The restaurant's design was conceived by interior architect Jakob Sprenger, guided by the creative vision of entrepreneur Antonia Crespí—founder of Tarmak22 and Casa Gstaad. The space blends contemporary aesthetics with the rich Alpine heritage of Gstaad. Sprenger, an Austrian designer based in Switzerland, is celebrated for his thoughtful approach to natural materials, crafting unique, tailor-made environments for each project.



Alpina Lounge

The Alpina Lounge represents a refreshing Swiss Alpine flair with floor to-ceiling windows connecting the bar interior to the outdoor terrace. Featuring an eclectic collection of spirits from all over the world, the bar offers an extensive range of cocktails from all-time classics to more avant-garde craft-cocktails.

The dishes offer international flavours and provide a full range of culinary options from hearty dishes to smart and healthy food choices, including Mediterranean, vegetarian and vegan diets.



R E S T A U R A N T S

Swiss Stübli

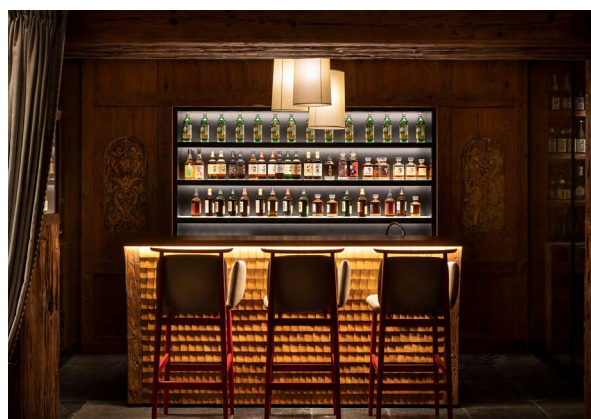
Swiss Stübli is the embodiment of the Alpine spirit that takes you back in time. The authentic Swiss restaurant exudes warmth, intimacy and character featuring original time pieces made by generations of local craftsmen.

Welcome to the Stübli, kick back and relax in this cosy space while indulging in some heart-warming Swiss specialties. Your insider location for Swissness at its best.



Cigar Lounge

Inspired by the 1930s chic of one of Havana's most famous establishments, our wide selection of cigars is for true aficionados.



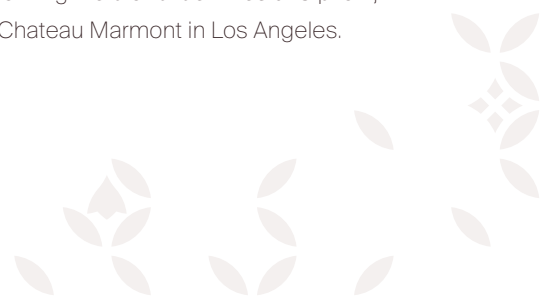
Japanese Whisky Bar

Clad entirely in rustic stone and wood, this perfectly acclimatised room stores over 900 bottles sourced from the world's best winemakers – rarities of red and white wines, exquisite sparkling wines, champagnes and sake. The spotlight, however, is placed on the collection of over 40 renowned as well as rare Japanese whiskies.



Visual Identity

Adding to the recent renovations of the restaurant spaces, The Alpina Gstaad's dining experience has been complemented by a refreshed visual identity for its menus. This redesign was led by Creative Director Alexander Kellas, known for revitalizing the brand identities of Cipriani, Les Bains Paris, and Chateau Marmont in Los Angeles.





BUSINESS & PRIVATE EVENTS

The Alpina Gstaad is the ideal venue for business and private events. Whether for executive meetings, creative seminars, private events and celebrations, with our state of the art infrastructure and our commitment to detail we help to create a memorable experience.

Salle Sarine

Centrally located on the hotel's entry level, the Salle Sarine ballroom's grand dimensions comfortably adapt to a wealth of event possibilities.



Meeting rooms

The Alpina Gstaad offers two elegantly designed boardrooms, each outfitted with a tailor-made boardroom table and premium executive seating. Both are equipped with state-of-the-art business technology.

Private Cinema

Our private Cinema seats up to 18 guests in plush executive seating. Featuring an extra-large screen, dramatic lighting, and state-of-the-art sound, it seamlessly adapts for meetings, private screenings, or exclusive parties with professional equipment.





S E R V I C E S

Six Senses Spa

Six Senses Spa Gstaad offers a layered approach that unites a pioneering spirit with treatments that go beyond ordinary. At Six Senses Spa, you will find an intuitive mix of science and human awareness, where our high-tech and high-touch approach defines a service that is crafted around the individual.

Spread over 2,000 square metres, the indoor and outdoor pools and the unique treatments developed by our skilled practitioners round off a plethora of spa services that are recognized far beyond the borders of Switzerland. Highlights include Tibetan treatments, biohacking and special classes.



Tree House Club

The Tree House Club is a space entirely dedicated to play and adventure. Under the attentive gaze of trained childcare professionals, younger guests can enjoy a range of fun activities designed by the team. A special programme is available with different activities everyday.

Children under the age of 4 must be accompanied by an adult.





thealpinagstaad.ch

Alpinastrasse 23 ✦ 3780 Gstaad, Switzerland
T. +41 33 888 98 88 ✦ F. +41 33 888 98 89 ✦ reservations@thealpinagstaad.ch

