



## AN ICONIC ALPINE EXPERIENCE



The Alpina Gstaad is a five-star luxury hotel in Switzerland for the world's most discerning travellers. More than just a place to stay in the Alps, it is an icon for Gstaad mindful, conscious and responsible luxury. Situated in the heart of nature, the eco-friendly hotel combines Swiss traditions with state-of-the-art infrastructure and services. Sustainability and innovation are the pillars by which The Alpina Gstaad is driven. Local products and resources are integrated seamlessly throughout the hotel creating a modern

interpretation of Alpine chic. The Alpina Gstaad is a member of the Preferred Hotels & Resorts Legend collection, the exclusive Virtuoso travel network, and Swiss Deluxe Hotels. The hotel has received the 'Out Now' certificate – the world's largest LGBT travel trade association – guaranteeing certain standards to LGBT guests. With its commitment to environmental awareness, the property is a member of the NOW Force for Good Alliance and certified Gold by EarthCheck.





## PANORAMA RESIDENCE

3 BEDROOMS, 400 m<sup>2</sup> / 4'306 ft<sup>2</sup>

The Alpina Gstaad's Panorama Residence is a spacious duplex located on the top floors. It features three en-suite bedrooms that comfortably accommodate up to six guests - two situated on the lower level and one on the upper level. The expansive living area includes a wood-burning fireplace, a fully equipped kitchen, and a dining table that seats eight guests. On the upper floor, guests can enjoy a private wellness oasis, complete with a spa room, sauna, steam room, gym, and an outdoor jacuzzi.



### DETAILS

- Fully equipped modern kitchen with private entry and professional wine cabinet
- Private spa area with sauna, steamroom, outdoor jacuzzi, fitness, spacious relaxation area and massage corner







## PANORAMA RESIDENCE







## MASTER BEDROOM

33 m<sup>2</sup>/ 350 ft<sup>2</sup>

Sumptuous double bedroom with its own balcony, fireplace and walk-in dressing room  
Bathroom equipped with a large, free-standing tub, rainfall shower and a mirror TV







## BEDROOM GSTAAD

24 m<sup>2</sup> / 252 ft<sup>2</sup>

Cosy refuge with step-out balcony featuring a view of the majestic Diablerets mountains, separate ensuite dressing room and a spacious bathroom with bathtub, walk-in shower and toilet







## BEDROOM SCHÖNRIED

40 m<sup>2</sup>/ 435 ft<sup>2</sup>

Bright double bedroom with classic timber latticework, walk-in closet, generously-sized roofed terrace overlooking the picturesque scenery of Schönried, bathroom with shower and separate toilet

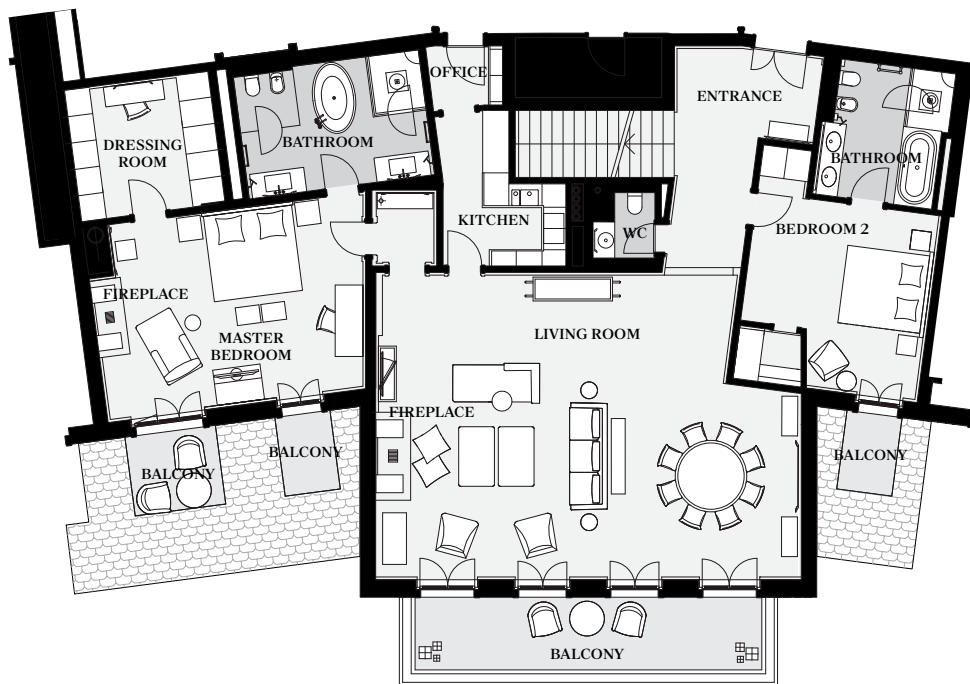




# FLOORPLAN

## 5<sup>TH</sup> FLOOR

Schönried view



Gstaad view

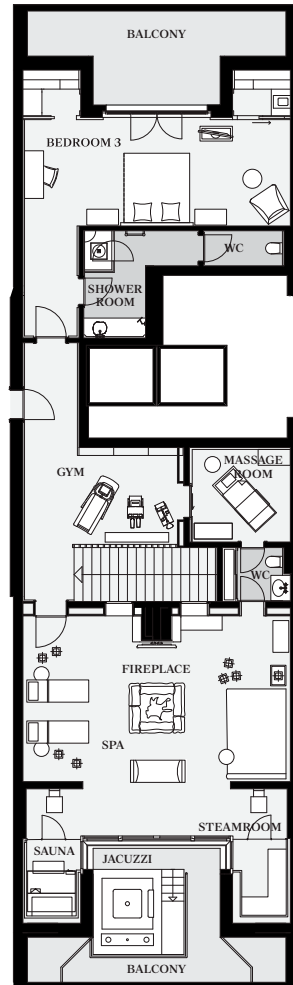


*Please note, room configuration and furnishings  
may differ from pictures and descriptions.*



# FLOORPLAN

## 6<sup>TH</sup> FLOOR



*Please note, room configuration and furnishings  
may differ from pictures and descriptions.*

[thealpinagstaad.ch](http://thealpinagstaad.ch)

Alpinastrasse 23 ✦ 3780 Gstaad, Switzerland  
T. + 41 33 888 98 88 ✦ [reservations@thealpinagstaad.ch](mailto:reservations@thealpinagstaad.ch)





thealpinagstaad.ch

Alpinastrasse 23 ✦ 3780 Gstaad, Switzerland  
T. + 41 33 888 98 88 ✦ reservations@thealpinagstaad.ch